



Save a life today

Be ready every time,
everywhere, with a
Mediana AED

- Automatic self-test
- Visual support icons
- Audible voice prompts
- Real time guidance
- Easy to use with or without training

MEDIANA
HEARTON
AED A10

Mediana Automated
External Defibrillator A10

MEDIANA HEARTON AED A10

EASY TO USE

1. STATUS INDICATOR.

Ensure the status indicator displays 'O.'



2. PUSH BUTTON.

Open the lid using the push button.



3. PLUG IN PADS.

Remove pads from protective packaging, then plug into the AED and apply to the patient.



4. PUSH THE 'POWER ON' BUTTON.

Voice prompt will respond:
"Unit OK"
"Adult Pads"

1 SOFT CARRY CASE to protect and easily transport the AED. Clear cover to view the status indicator. Side Pockets for manual, spare pads, spare battery.

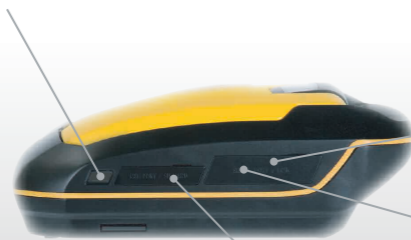


2 STATUS INDICATOR Unit status and battery capacity.

3 CONNECTING SOCKET Defibrillator pads connector socket.

4 POWER ON BUTTON The toggle key for turn on/off.

5 IRDA PORT IR communication port between PC and AED.



6 DC INPUT PORT (TRAINER ONLY) 15V/1.5A

7 SERIAL PORT (OPTION) Exterior printer demanded.

8 SD CARD INSERT AND USB PORT Review stored data and software upgrade.

14 reasons to choose Mediana...

9 VISUAL ICONS LED indicator lights flash with the corresponding voice prompts. Visual Icons clarify the necessary actions.



LCD TYPE ECG and text display.

10 SPEAKER Acoustic indicator for real time guidance.

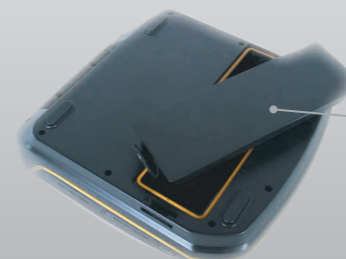
11 SHOCK BUTTON Flashing button indicates 'Ready for shock delivery.' Push the button to deliver shock.

12 PUSH BUTTON to open the cover.



13 PADS Adult pads for over 8 year olds. Pediatric pads for under 8 year old.

14 BATTERY Disposable LiMnO2 (non-rechargeable).



MEDIANA HEARTON AED A10

- Automatic self-test
- Visual support icons
- Audible voice prompts
- Real time guidance
- Easy to use with or without training

Our **FREE** E-learning course at:
www.medianadefib.co.uk/e-learning

You do not need training to use the Mediana AED, as it is designed for untrained persons. It talks you through step-by-step directions, so there is no risk of shocking a casualty in error.

Training however, can save vital seconds and dispel any confusion if you encounter a Cardiac Emergency. This course has been designed for people with little knowledge of First Aid, providing information in four bite-size sections that are easy to remember.

You will be guided through four units;

Unit 1: Encountering a Casualty having a Cardiac Arrest

Unit 2: Airway, Breathing, Circulation

Unit 3: Using the Mediana AED A15

Unit 4: After the defibrillation of the Casualty

All information included in this E-Learning Resource has been based on the guidelines of:

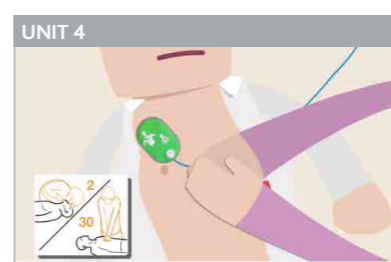
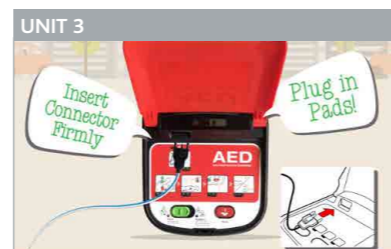
The European Resuscitation Council

The UK Resuscitation Council

PLEASE NOTE: There are slight variations in operating features of the Mediana A15 and A10 Models. Students opting for the e-learning course will benefit greatly, regardless of this, but are advised, that instructions in the course apply exclusively to the A15 Model. For the greatest benefit, all students should refer to the operating manual for the A10 Model which clearly explains the slight difference when starting up the A10.



Don't Miss!



MEDIANA HEARTON AED A10

- For every one minute delay, a victim's chance of surviving a sudden cardiac arrest drops by 7-10%.
- Almost 95% of sudden cardiac arrest victims die before reaching hospital.
- CPR effectively administered immediately after sudden cardiac arrest, can double the chance of survival for a victim.
- Seven out of ten cardiac arrests occur outside of hospital. Currently in the UK, only 2-3% of these people survive.
- The Department of Health has a target of placing 3,000 new defibrillators in public places throughout England.
- Explorer, Sir Ranulph Fiennes, is alive today largely thanks to a defibrillator located at Bristol airport.
- Early defibrillation can triple a victims chance of survival.



SPECIFICATIONS

DEFIBRILLATION ELECTRIC SHOCK

Waveform:	Biphasic Truncated Exponential (BTE) Waveform (impedance compensation)
Energy:	Adult: 185 to 200J (±5%) Paediatric: 45 to 50J (±5%)
Operating Mode:	Semi-Auto
Charging Time:	< 10 seconds typical
Analysis Time:	8-13 seconds
Shock Time:	Delivers 200 Shocks with full battery

ECG

Lead:	II (RA, LL)
Patient Impedance:	25 to 175ohm
Heart Rate:	20 to 300 per min
Accuracy:	1 per min
Detection:	V/F more than 200 µV V/F more than 160 per min
Lead off detection:	Detected and voiced
Filter:	0.5 to 30Hz

INDICATION

CONTROLS

Standard: Green Power on/off button. Red Shock button

INDICATORS

Visible: ICON (LED) Indicator, Status LCD (unit status and battery capacity).

Audible: Audio speaker (Voice prompt), Beep (CPR indication).

PHYSICAL

Dimensions:	314H x 259W x 109mmD
Weight:	Approx. 2.95kg (including battery, excluding pads).

SELF-TEST

Cycle:	Every 24 hours, 1 week, 1 month Power on self-test, battery insertion self-test
Test Result:	Status LCD displays 'O' / 'X'

DATA BACKUP AND COMMUNICATION

Standard SD card, infrared communication port

ACCESSORY SPECIFICATIONS

ADULT/PAEDIATRIC PADS

Standby Life:	2 years from date of manufacture
Electrodes:	Disposable pads
Placement:	Adult: Anterior-lateral Paediatric: Anterior-posterior
Minimum active gel area:	Adult: 96.25cm ² Paediatric: 69.53cm ²
Cable Length:	1.7m

Environmental Conditions

Temperature:	Operation: 0 to 43°C (32 to 109.4°F). Storage: 0 to 43°C (32 to 109.4°F).
Relative Humidity:	5 to 95% RH (non-condensing).
Altitude:	Operation: 0 to 4,575m Storage: 0 to 12,192m
Shock:	Acceleration: 100G (+/- 10%).
Vibration:	Frequency: 10Hz to 2000Hz Acceleration: 10Hz to 100Hz: 5,0 (m/s ²)/Hz 100Hz to 200Hz: -7 dB per octave 100Hz to 2000Hz: 1,0 (m/s ²)/Hz

Drop Height:	1m
Water and Dust Resistance:	IP54 (IEC60529)

BATTERY

Type:	Disposable LiMnO ₂ , long-life primary cell
Voltage/Capacity:	15V, 4200 mAh
Shelf Life:	2 years from date of manufacture (in the original packaging).
Standby Life:	5 years from date of manufacture (inserted in the AED).
Discharge:	A minimum of 200 shocks (except the CPR period between the defibrillation therapy), or 10 hours of operating time at 20°C

Information correct at time of going to press. Subject to change without notice.

MEDIANA HEARTON AED A10



Mediana A10 HeartOn AED

HeartOn AED Semi-Automatic

Semi-Automatic.
Support LED Icons.
Voice Prompt.
Self-Test.
Status Indicator.
Adult Pad included.
Paediatric Pad (optional).
Suitable for schools, teams and clubs.

REF	PRODUCT	DESCRIPTION	UNIT	PACK
2864	Mediana A10 HeartOn AED	Semi-Automatic	1	1

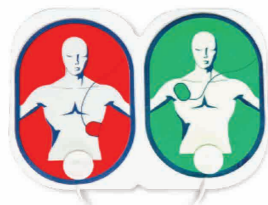


Mediana A10 AED Trainer

HeartOn AED Semi-Automatic

Semi-Automatic.
Ten Available Training Scenarios.
Infrared Remote Control.
Suitable for schools, teams and clubs.

REF	PRODUCT	DESCRIPTION	UNIT	PACK
2885	Mediana A10 HeartOn AED	Trainer	1	1
2886	Mediana A10 Training Pads	Adult Only	1	1

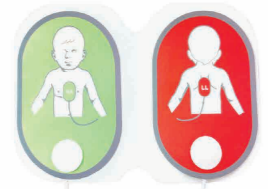


Mediana A10 Pads

Adult and Paediatric

Replacement Pads.
2 years Standby life.
1.7m Cable length.

REF	PRODUCT	DESCRIPTION	UNIT	PACK
2866	Mediana A10 Adult Pad	Disposable	1	1
2867	Mediana A10 Paediatric Pad	Disposable	1	1



Mediana A10 Battery Pack

Disposable.
LiMnO2 Non-Rechargeable.
Two years shelf life.
Five years standby life.

REF	PRODUCT	DESCRIPTION	UNIT	PACK
2865	Mediana A10 Battery Pack		1	1



Beat CPR

Resuscitation Aid

Compact.
Audible tone guides CPR compression speed.
Pre-programmed to 110 beats per minute, adjustable.
Display visible in all light conditions.
Long-life renewable battery included.

REF	PRODUCT	DESCRIPTION	UNIT	PACK
2860	Beat CPR Resuscitation Aid		1	1



Sofia Metal Wall Cabinet

White

Ideal first aid room cabinet
Suitable for clinical environments
Durable stove-enamelled construction
Not recommended for medicine storage

REF	PRODUCT	DESCRIPTION	SIZE	UNIT	PACK
214	Sofia Metal Wall Cabinet	White	46cmH x 30cmW x 14cmD	1	1



Outdoor Heated Wall Cabinet

with Alarm

Carbon steel cabinet.
Anti-theft radio with magnetic sensor.
Thermally regulated heating system.
For outdoor use.
Alarm system.
Safe and visible.
Wall mountable.
AED not included.

REF	PRODUCT	DESCRIPTION	SIZE	UNIT	PACK
2103	Outdoor Heated Wall Cabinet	with Alarm	48cmH x 42.5cmW x 21.5cmD	1	1



AED Prep Kit

Contains the basic items typically required for an AED Emergency

CONTENTS
1 Cleansing Wipe
1 Clinical Waste Bag
1 Disposable Razor
1 Gloves (Pair)
2 Hand Towels
1 Resuscitation Device
1 Shears

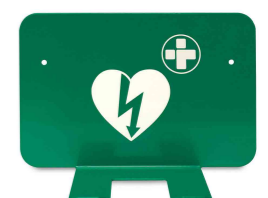


REF	PRODUCT	DESCRIPTION	UNIT	PACK
2877	AED Prep Kit		1	1

Universal AED Bracket

Universal AED bracket.
Sturdy metal bracket is ideal for mounting any AED on a wall.

12.3cmH x 19cmW x 9.5cmD



REF	PRODUCT	DESCRIPTION	UNIT	PACK
2879	Universal AED Bracket		1	1

MEDIANA HEARTON AED A10

Mediana Automated
External Defibrillator A10



www.medianadefib.co.uk

t. +44 (0) 08456 448808
e. sales@reliancemedical.co.uk
w. www.reliancemedical.co.uk

Mediana HeartOn Defibrillators are supplied
by Reliance Medical Limited.

